

# GCSE MUSIC

EDUCAS GCSE MUSIC



DESBOROUGH COLLEGE



# COURSE STRUCTURE

■ Create 2 contrasting compositions (4-6 minutes min combined) 30%

■ Record 2 performances – one solo  
one group (4-6 minutes min combined) 30%

■ One hour and 15 **listening** exam 40%



# THE COURSEWORK- PERFORMANCE

30% of the course

Starts in Year 10 and continued into Year 11

- You can play on any instrument that you are strong at or committed to improve on
- You get to choose the pieces you want to learn to play but with my help to get the best mark
- The level of difficulty of the pieces will be considered and something too easy will lose you marks, same as something too hard that you make mistakes in!
  - You must play for a combined total of 4-6 minutes for all performance work
- You practice the music and then we record it, this gets marked by me and then sent to the examiner to mark



# THE COURSEWORK- COMPOSITION

30% of the course

Starts in Year 10 and continued into Year 11

- This unit requires you to develop your skills in making up your own music
- In KS4 you get to use the Music Studio room, including microphones and IMacs. We also have MacBook's to use for composing on using Garage band and Logic as well as Sibelius and Acid Music on the PCs.
  - Each composition must be based on a different style and be contrasting.
- You will be given a style to compose in for one of the compositions and the other is your choice.
  - Each needs to be recorded and scored (written up)



# THE EXAM

**40% of the GCSE**

**Sat in Year 11**

An 1.15 hour paper where lots of music is played to you and you answer questions about it

- **Area of study 1: Musical Form and structure**
- **Area of study 2: Music for Ensemble (groups)**
- **Area of study 3: Film Music**
- **Area of study 4: Popular Music**

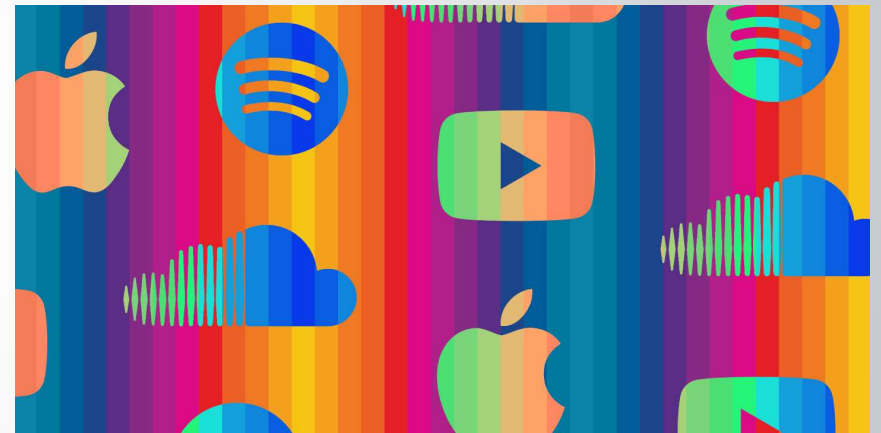
You will work on your listening and evaluating of music from different genres and styles.



# WHY CHOOSE MUSIC?

Music is a great subject to have a qualification in as it shows....

- Creativity and original idea development
- individual and group skills
- dedication and commitment to improve
- talent and ability that not everybody can do
- confidence
- good time keeping, meeting deadlines
- good listening skills



There are lots of careers that you can go into with a music qualification, including business, law, advertising, design, song writing and teaching

There will be chances to go on trips and do workshops to gain new experiences



## MUSIC AT KS4...

### A GCSE Music student is....

A good listener

Likes to play pieces of music and challenge themselves on an instrument

Likes to work independently and in a group

Likes coursework = 60%

Wants to learn about how to compose their own music

Is good at identifying music by ear and wants to improve in this area



Any questions  
please email Mrs  
McFarlane

